



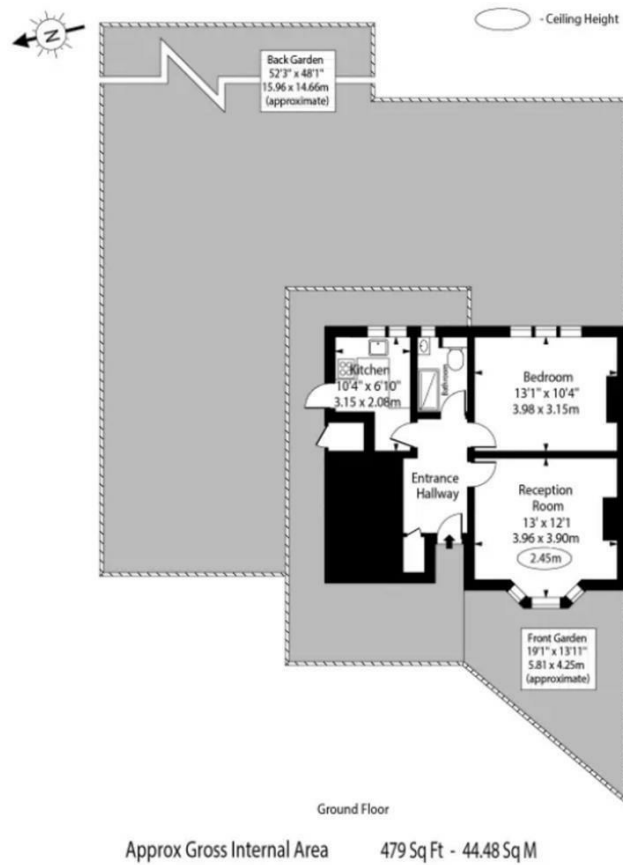
MIDHOLM CLOSE

LONDON, NW11 6EB

£1,900 PER MONTH

A modern one bedroom ground floor maisonette benefitting from having its own private entrance and private garden. The apartment offers modern fixtures and fittings and comprises, generous reception with bay window, separate fully fitted kitchen, principal bedroom and shower room. Local amenities can be found at the Market Place.

david harris & co



| Energy Efficiency Rating | | |
|---|-------------------------|-----------|
| | Current | Potential |
| Very energy efficient - lower running costs | | |
| (92 plus) A | | |
| (81-91) B | | |
| (69-80) C | | |
| (55-68) D | | |
| (39-54) E | | |
| (21-38) F | | |
| (1-20) G | | |
| Not energy efficient - higher running costs | | |
| England & Wales | EU Directive 2002/91/EC | |

Agents Note: Whilst every care has been taken to prepare these particulars, they are for guidance purposes only. All measurements are approximate and are for general guidance purposes only and whilst every care has been taken to ensure their accuracy, they should not be relied upon and potential buyers/tenants are advised to recheck the measurements

Finchley Lettings
358 Regents Park Road
Finchley
London
N3 2LJ

020 8346 9122
info@davidharris.co.uk
www.davidharris.co.uk

david harris & co